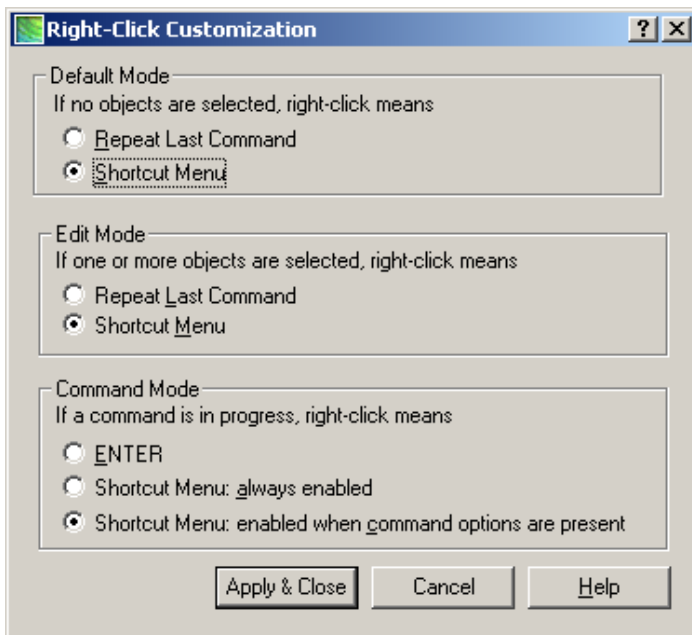


Customization #2

This month's CADNET Corner is a continuation of last month's customization article. We will look at some additional settings to customize your AutoCAD desktop.

I left off last month on the Display tab of the AutoCAD options. The lower left corner of this tab includes the defaults for working with layouts. These settings control how a layout will look when you create one. You always have the option to change it later. There are also a number of settings on this tab to control your systems performance. These settings control such things as display resolution and display performance.

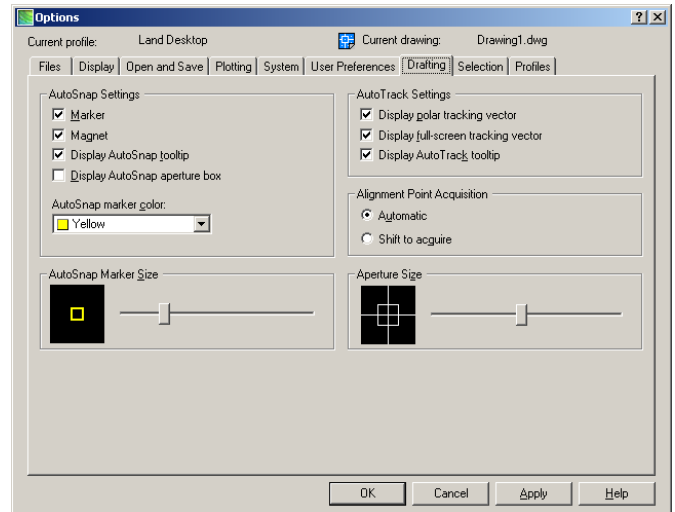
Let's take a look at another handy customization tool in AutoCAD 2000 and up. The right click customization setting. This is found on the User Preferences tab. This is one of my favorite functions in AutoCAD. In previous versions many people used the right button on the mouse to perform an "Enter" command similar to hitting the enter key on the keyboard. Now you are able to access menus to perform many functions simply by selecting the right mouse button. A great example is in labeling linework on a plan. You can simply select all the lines you want to label, right click, select your label command from the menu, and all lines are labeled. You can see the dialog box below.



Keep in mind that the first option on the menu is always to repeat the last command, similar to the way the right click used to work as an "Enter."

The next tab I will discuss is the Drafting tab. This is where you can set the size of your aperture box, and the size of your Autosnap box.

You also have the option of selecting colors for your Autosnap box, and whether you want the magnet setting on or off and if you want to see the tool tip indicating which Autosnap is being selected. The next tab is Selection. This is where you set Pickbox size and whether you want to use grips or not.



The last tab on the Options dialog box is the profiles tab. This is where you save all the settings that you have set in the options dialog box. You can create different profiles for different users or for different types of projects. The profiles can be exported out of AutoCAD to a file. If you have this file available on a server or even a diskette, you can take your personalized settings with you to any AutoCAD workstation. This is especially handy if you share a computer with someone else, or if you have to work on someone else's PC for a short time.

So, the profiles set up the AutoCAD settings, and allow you to carry those settings with you from machine to machine. Another personal setting you can control is the Menu Palette. Menu Palettes are only available in Land Desktop. These palettes control the menus that are shown across the top of your screen. You select which menus you use most often and add them to your custom Menu Palette. You can always access the other menus from the other palettes.

If you want to discuss customization or any other CAD or Network related issues, call me at CADNET Services, toll free 1.866.5CADNET or email me at rladd@cadnetserv.com. You can also check out our website at www.cadnetserv.com.

TIP: To control the ability to pan and zoom with the wheel on your mouse, use the system variable "mbuttonpan." A setting of 1 turns this function on, and 0 turns it off.