

# Land Desktop Points 1

Let's take a look at points and how they work in Land Desktop. Points have come a long way from when they used to be just a block with some attributes attached. Points are the graphical representation of a coordinate location. They sometimes have a description assigned to them as well as an elevation.

I have spent time working with many firms throughout New England, and you would be surprised how often the points are ignored. As Land Surveyors are concerned, the points are probably the most important part of the project. Sure, the lines on a plan may indicate a boundary or roadway, but those lines all begin and end at a point. In fact many surveyors today still use programs that have no graphical representation, such as Benchmark, to perform their cogo functions.

I am going to discuss the point objects in Land Desktop. Prior to Land Desktop, there was Softdesk. A block with attributes controlled the points in Softdesk. These attributes were changed by the software to indicate point number, description and elevation. If you ever exploded a point, you reverted back to the block pieces. All information about what that point was depicting was lost.

Along came Land Desktop points. These points are not blocks, but intelligent objects. For example if you list a point object, you will see all the information known about that point. Northing, easting, elevation, description etc. The point still displays the same as it did before (see figure 1), by default, but we now have many options on how it can display.



Figure 1

Points can be displayed in land desktop in a variety of fashions. See figure 2 for some examples. We can control which pieces of text are displayed. For example, if we don't want to see elevations, we can simply turn off the elevation display option. We used to have to freeze certain layers to control what was shown and not shown. This was a global setting, turning of all elevations. With point objects we can choose which one to turn off.

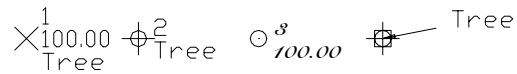
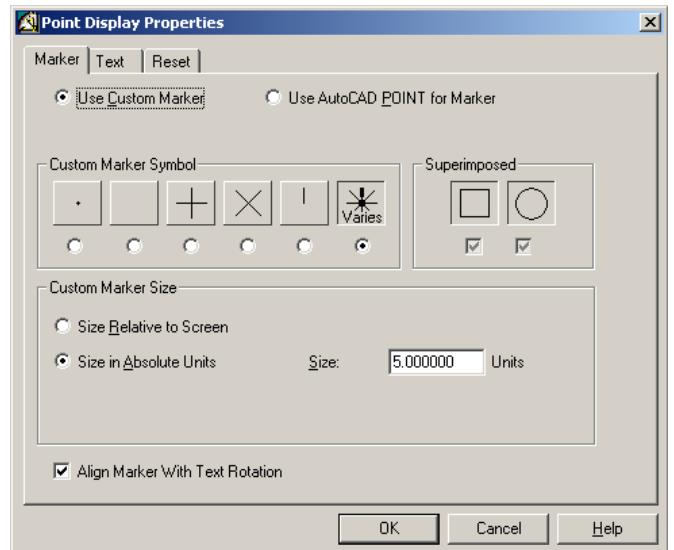


Figure 2

In the figure above, you can notice that the four points are all displayed differently. This is controlled by the display properties command. It can be found on the Points menu or by selecting the points you wish to change, and right clicking your mouse. When performing either command, you will see the following dialog box.



The first tab controls the type of marker you want to see. You can see the options above. You can also superimpose a circle or square on the marker. Size of the marker is controlled by the Custom Marker Size option on the bottom. The text can also be controlled on this dialog box. Text style, size, color and whether or not a piece of text is displayed are controlled on the Text tab. Also on the text tab is the option for rotating text on points and for automatic leaders. When the leaders option is turned on, leaders will be drawn the text to the true location of the point if the text is moved.

A real important thing to realize is that the points are stored external from the drawing in a database. The database is in a Microsoft Access format, and is stored in the Cogo folder of the project. This allows us access to the points even when not in Land Desktop. This also means that points do not have to be in the drawing to be accessed.

I will continue next month on more of the point options. If you have any questions or comments, on any CAD or Network related issues, call me at CADNET Services, toll free 1.866.5CADNET or email me at [rladd@cadnetserv.com](mailto:rladd@cadnetserv.com).