

Land Desktop Points 3

Continued from last month. Point Groups. In Figure 1, you see the “Create Point Group” dialog box. This is where you can create new point groups. These groups can be used for many purposes such as controlling how points appear in the drawing, labeling points with text labels for finished plans, and for building terrain models.

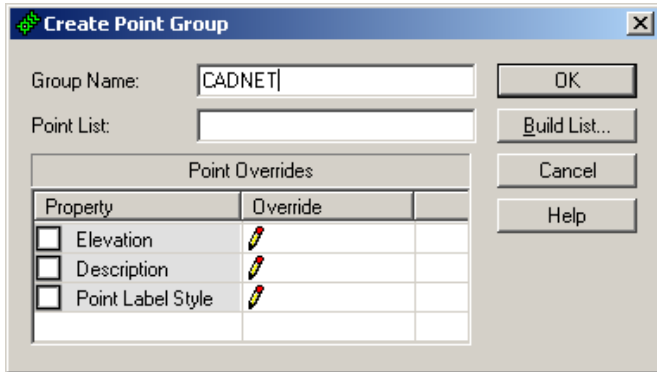


Figure 1

You can use a number of options to create the point groups to get the results you are looking for. For example, if you know that the Traverse Group will contain the points 1-4, you can simply type that list into the Point List box. Or if your company policy is that all traverse points are numbered between 1-99, you can simply use that as your list. Even if you only have 4 points in your traverse, the group will contain those 4, and no others. Topo points may be 100-1000, so you can use that as your Topo Point Group list and so on. If your company has standardized on a point numbering scheme, such as 1-99 Traverse, 100-999 topo, etc, you can preset these groups for all projects.

If not, or if your point numbering is not sequential, you can use another tool for creating your groups. Shown in Figure 2 is the Filter option for creating Point Groups. To use this feature, you first select the points you want to select from. That is the source. It could be a listing of points, an existing Point Group or all points. The next step is to use the filters show in Figure 2.

You can sort points by number range, description, elevation, name or XDREF. An example might be that you are trying to create a Traverse Group. Your point numbers may be all out of order, but you called all your traverse points “STA” in your descriptions. You could simply use the “With description matching” toggle, type in “STA” for description, and the software will search through the project points for any point with that description. Then you select the Add button to add those numbers to the group.

You can also remove points from groups in the same manner, but select the Remove button instead. Don't worry; this does not remove the points from the project, only from the group.

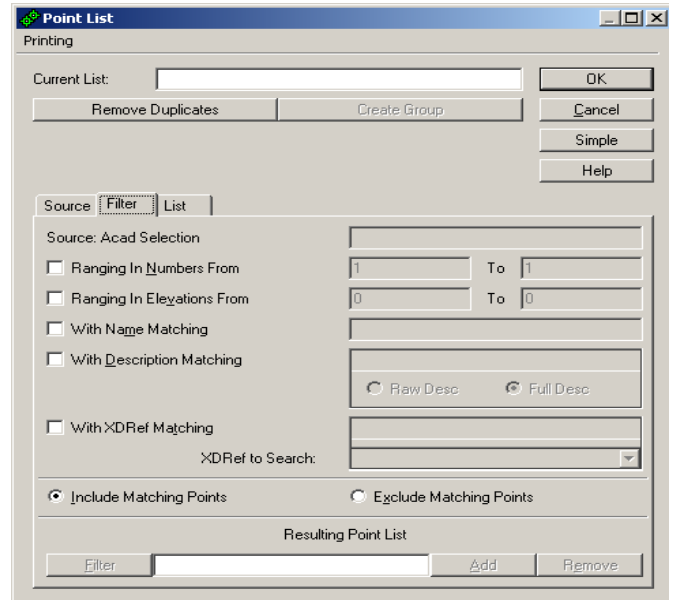


Figure 2

In the Point Group Manager, after you have created at least one group, you will see an icon that looks like a magnifying glass. This is the Properties icon. It allows you to make changes to your existing Point Groups. Suppose you create a group called CADNET and made the point list 1-1000. Now you need to add points 1001-1200. Simply select the properties icon, open the Point Group Properties window, and edit the Point List. (see Figure 3).

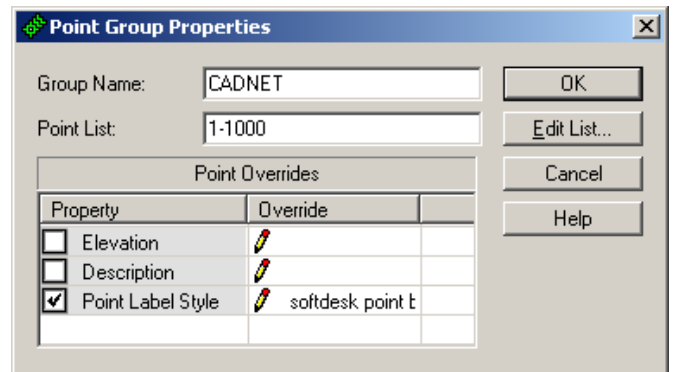


Figure 3

Here you can also edit the Point Overrides if you wish to. In the example above, the override is to have all points in this group use the Softdesk Point Block style. Using this will insert the points using the old Softdesk point block. This is handy when working with clients or consultants still using Softdesk.

If you have any questions or comments, on any CAD or Network related issues, call me at CADNET Services, toll free 1.866.5CADNET or email me at rladd@cadnetserv.com. Also check out our website at www.cadnetservices.com.